

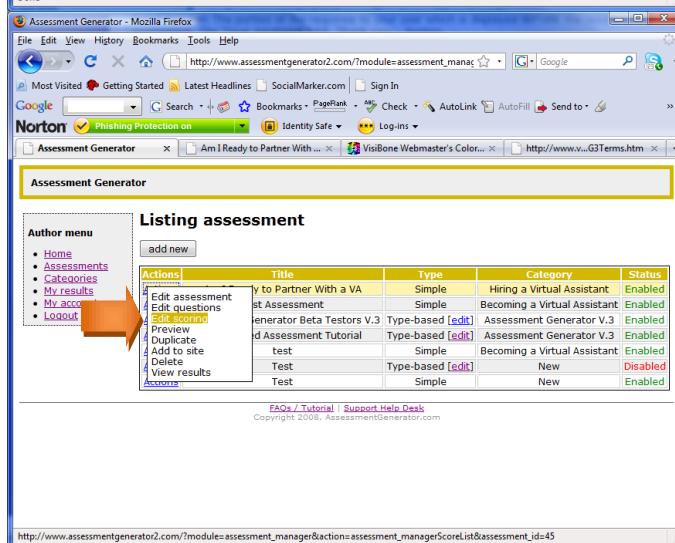
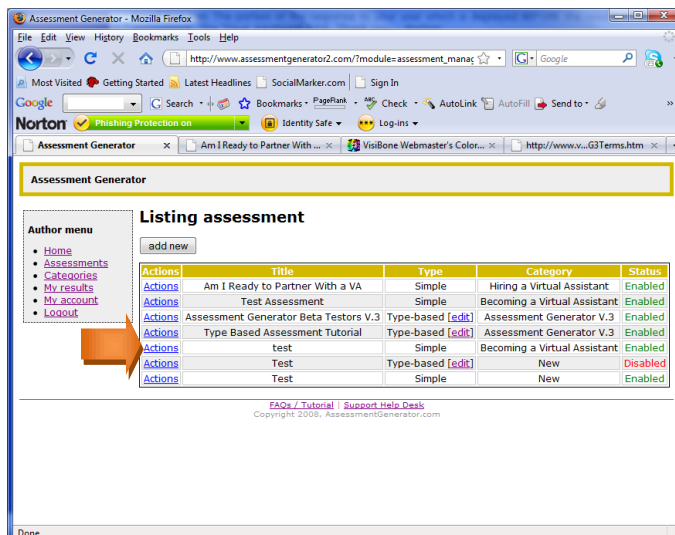
# ASSESSMENT GENERATOR TUTORIAL

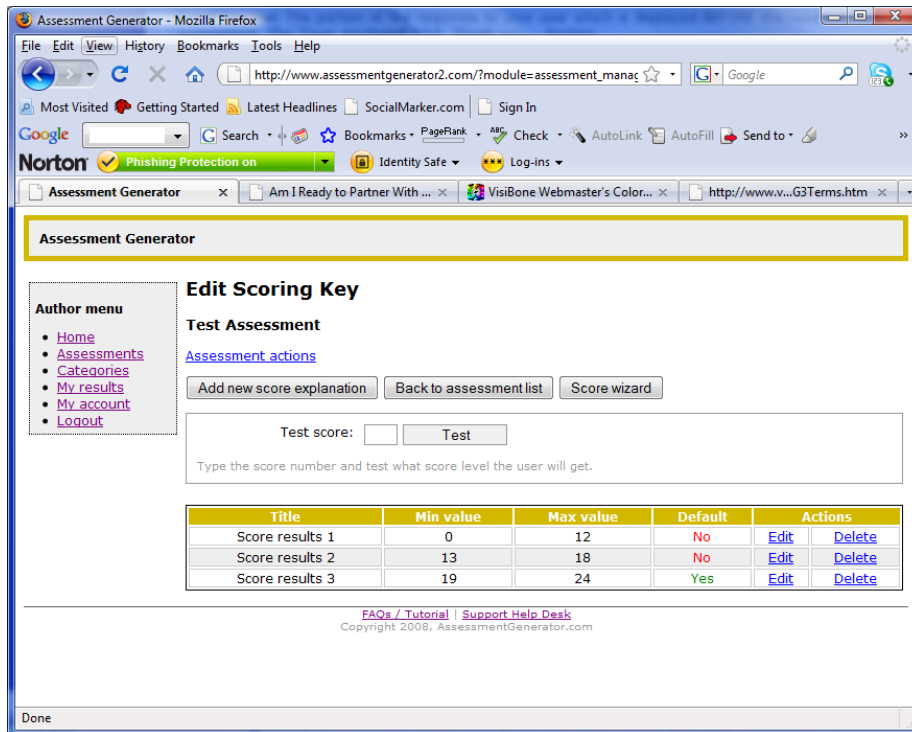
## SIMPLE TYPE ASSESSMENT – SCORE KEYS

Score Keys are used ONLY in the Simple Type Assessment

Choose Assessments from the left menu

From the list of Assessments, Click the Actions drop down menu in the Actions Column, choose Edit Scoring





1. Choose Add new score explanation
2. Add a title of your score
3. Choose the range of the score in the Score Values
4. Add the text you would like your participant to see in the Results Screen when he/she finishes the assessment – Tip: Use the arrow on the left of the text boxes to access the customization screen.
5. Hit Submit at the bottom of the screen

From the Edit Scoring Key screen, you can Edit your Score Keys, edit the scores or delete the Score Key and add new score keys. These are updated dynamically and once you hit submit, the new Score Key will be active online in your assessment